

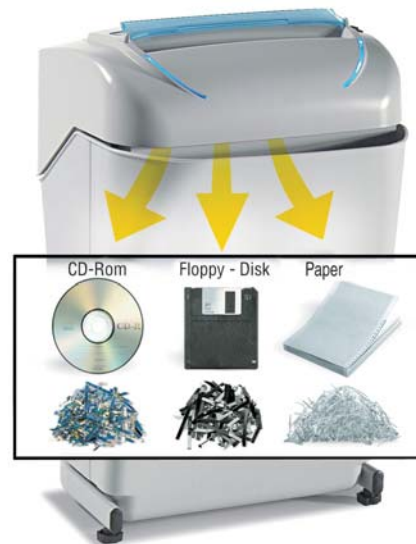
**Multipurpose and Multimedia
"Energy Smart" shredder**

Manufacturer: ELCOMAN S.R.L.
Brand: KOBRA
Model: KOBRA 240 SS5 TURBO E/S
Article code: 99.721 E/S - 574

KOBRA 240 SS5 TURBO



Throat width:	240 mm
Shred size:	5,8 mm. straight cut
Sheet capacity (A4/70 gr. paper):	50/52
Security Level DIN 32757:	2
"ENERGY SMART" management system:	yes
Speed:	0,035 m./sec.
Noise level (idle/shredding):	54/55 dba
Credit cards:	yes
CD-Rom:	yes
Floppy-Disk:	yes
Voltage:	230 V.
Power:	460Watt
Dimensions (WxDxH):	37x33x56 cm.
Weight:	14 Kg.



Multipurpose and Multimedia straight cut shredder, equipped with "**TURBO BOOST**" system for **extra shredding capacity** and with "**ENERGY SMART**" system with optical illuminated indicators for **zero power consumption in Stand-by mode** and **environmental protection**.

- **24 hours continuous duty motor**
- Heavy duty chain drive with steel gears "**SUPER POTENTIAL POWER UNIT**"
- Automatic Start/Stop through electronic eyes with stand-by function
- Automatic Stop when waste bin is out with light signal
- Does not require plastic bags
- Carbon hardened cutting knives take staples and paper clips
- Convenient 35 liters removable waste bin equipped with a special mechanism to **separate shredded paper from plastic shreds** of credit cards, CD-Rom and Floppy-Disks
- Motor thermal protection
- Certification marks: CB – CSA – CE
- Manufacturer: Elcoman – Via Gorizia n° 9, 20030 Bovisio Masciago, (Milan) – Italy
- Packaging: 1 unit per box
- EAN Barcode 8 026064 007218



"TURBO BOOST" system:
by pressing the Turbo switch the shredding capacity of the machine is increased to shred up to **52 sheets** in one pass



Removable waste bin with a special mechanism to **separate shredded paper from plastic shreds** of credit cards, CD-Rom and Floppy-Disks



"ENERGY SMART"
Management system for **zero power consumption in Stand-by mode**